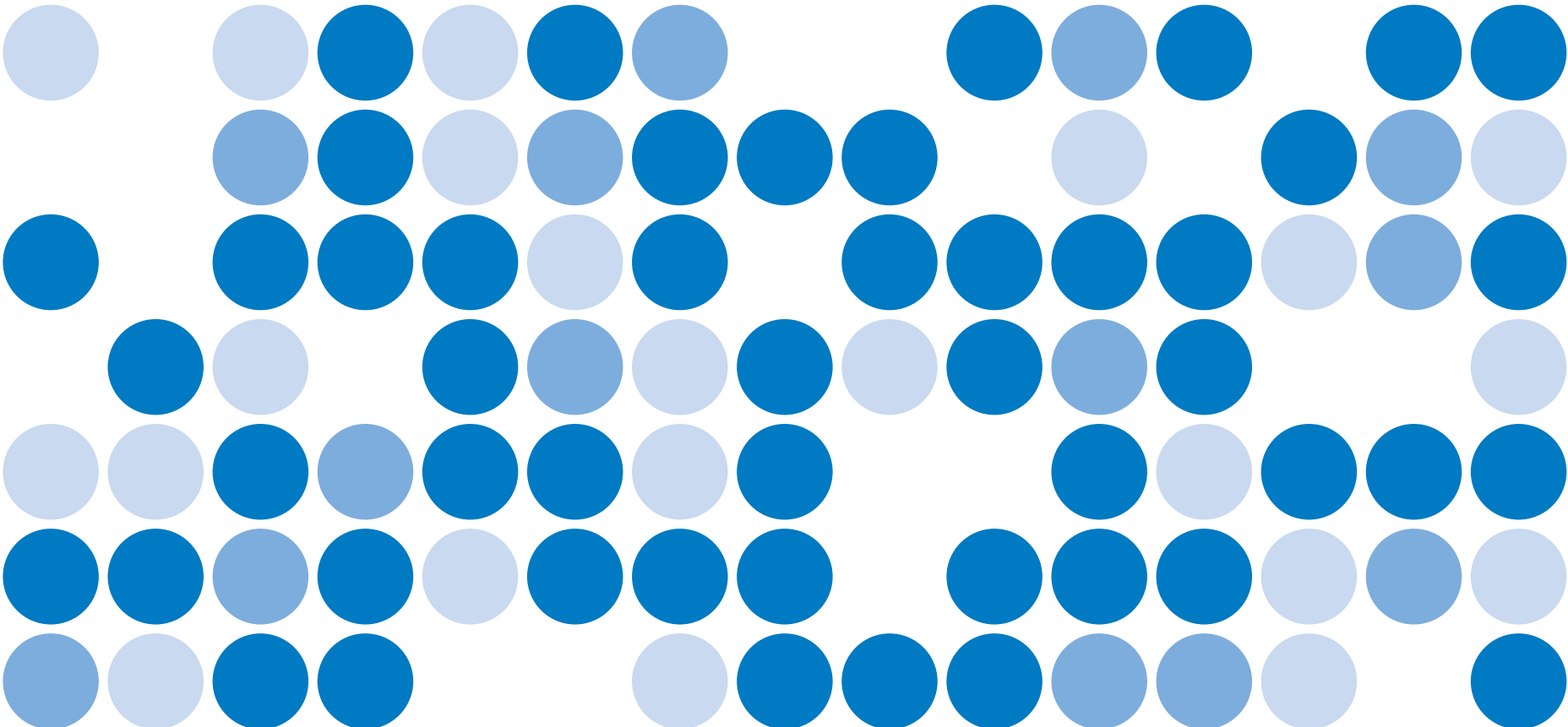


FINANCIAL FACT BOOK 2005

OMRON

Sensing tomorrow™



CONTENTS

目次

Sales Data		売上
Net Sales	1	売上高
Sales Composition	2	部門別売上高構成
Sales by Region	3	地域別売上高構成
Profit Data		利益
Cost Composition & Operating Income / Net Sales	4	費用構成, 売上高営業利益率
Gross Profit Margin		売上総利益率
SG & A Expenses / Net Sales, R & D Expenses / Net Sales	5	売上高販売管理費比率, 売上高研究開発費比率
Income Before Tax/Net Sales, Net Income / Net Sales		売上高税引前純利益率, 売上高当期純利益率
Net Sales & Net Income per Employee	6	従業員1人当り売上高, 当期純利益
Interest Expenses & Interest Coverage		支払利息, インタレスト カバレッジ
Earnings per Share & Price-Earnings Ratio	7	1株当り利益, 株価収益率
Financial Statement Related Ratio		財務諸表に関する指標
Current Ratio & Working Capital	8	流動比率, 運転資本
Total Assets Turnover		総資産回転率
Inventory Turnover	9	たな卸資産回転率
Tangible Fixed Assets Turnover		有形固定資産回転率
Return on Tangible Fixed Assets	10	有形固定資産当期純利益率
Capital Expenditures & Cash Flows		設備投資額, キャッシュ・フロー
Return on Stockholders' Equity	11	株主資本当期純利益率
Return on Assets		総資産税引前純利益率
Stockholders' Equity / Total Assets	12	株主資本比率
Aggregate market value & Price Book-value Ratio		時価総額, 株価純資産倍率 (P. B. R.)
Cash Flows per Share	13	1株当りキャッシュ・フロー
Financial Statement		財務諸表
Consolidated Statements of Operations	14	連結損益計算書
Consolidated Balance Sheets	15.16	連結貸借対照表
Consolidated Statements of Cash Flows	17	連結キャッシュ・フロー計算書
Basic Information		概要
Main Products	18	主要製品
Common Stock Price Range	19	株価推移
Corporate Organization Chart	20	組織図
Corporate Data	21	会社概要

Notes:

- Figures have been calculated on a consolidated basis for the years ended March 31.
- Not all data have been audited. Refer to respective annual reports for audited figures.
- Data might be revised according to alterations to accounting standards.

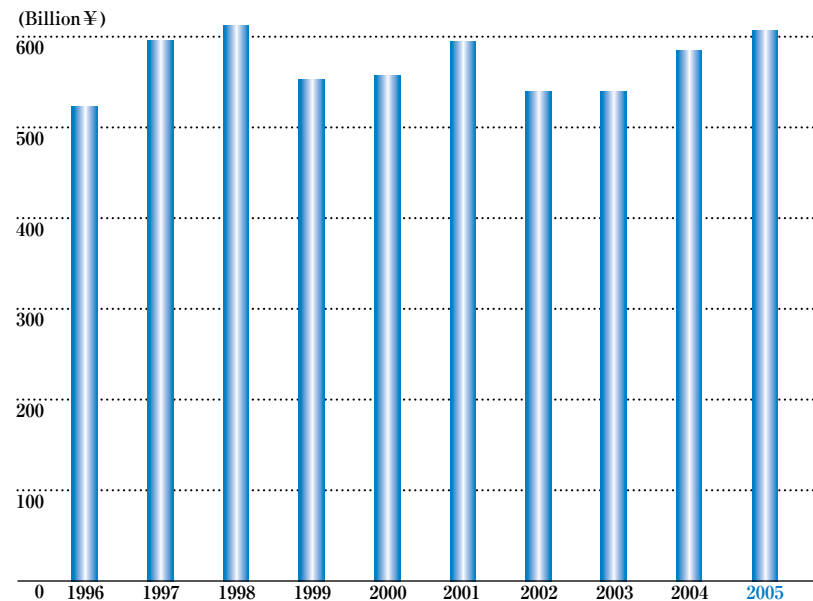
注:

- 記載されている数値は連結ベース。会計年度は4月1日～3月31日です。
- 監査されていないデータもあります。監査された数値に関しては、アニュアル・レポートを参照下さい。
- 会計制度の変更等により過去に遡って数値の修正を行うことがあります。

Net Sales

売上高

Net Sales
売上高

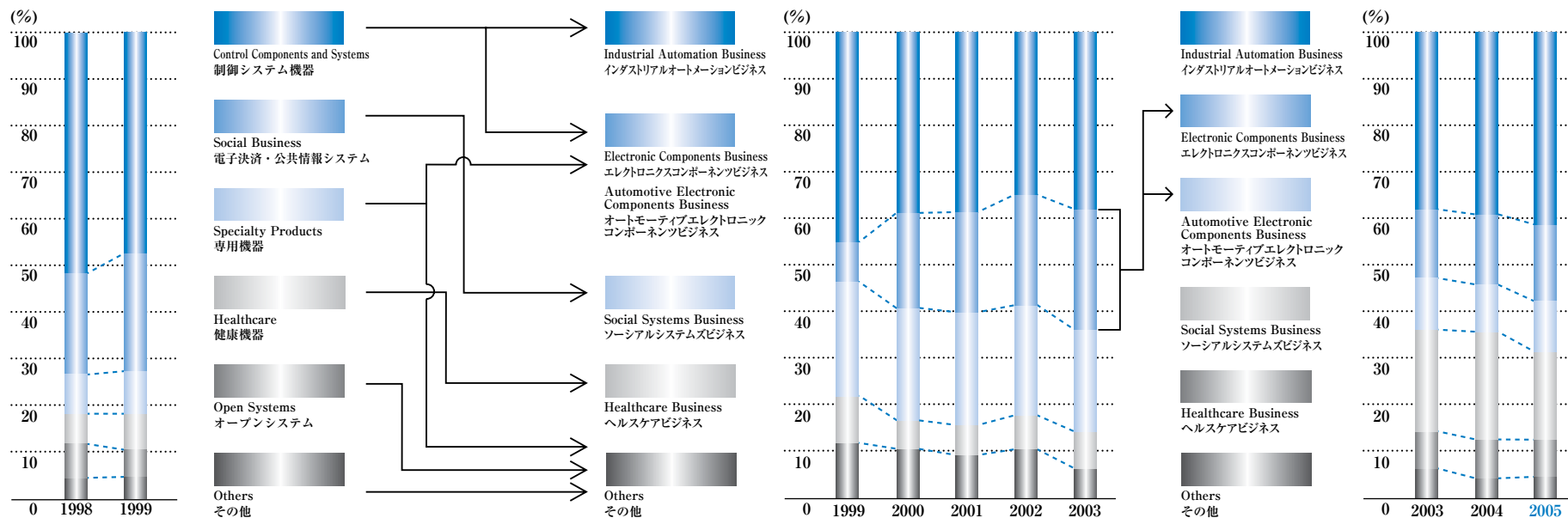


Net Sales 売上高

Fiscal Year ended March 31 ~年3月期		1996	1997	1998	1999	2000	2001	2002	2003	2004	2005
Net Sales 売上高	(Million ¥)	525,289	594,261	611,795	555,280	555,358	594,259	533,964	535,073	584,889	608,588
Annual Change 前年比	(%)	+7.3	+13.1	+3.0	-9.2	±0.0	+7.0	-10.1	+0.2	+9.3	+4.1

Sales Composition

部門別売上高構成



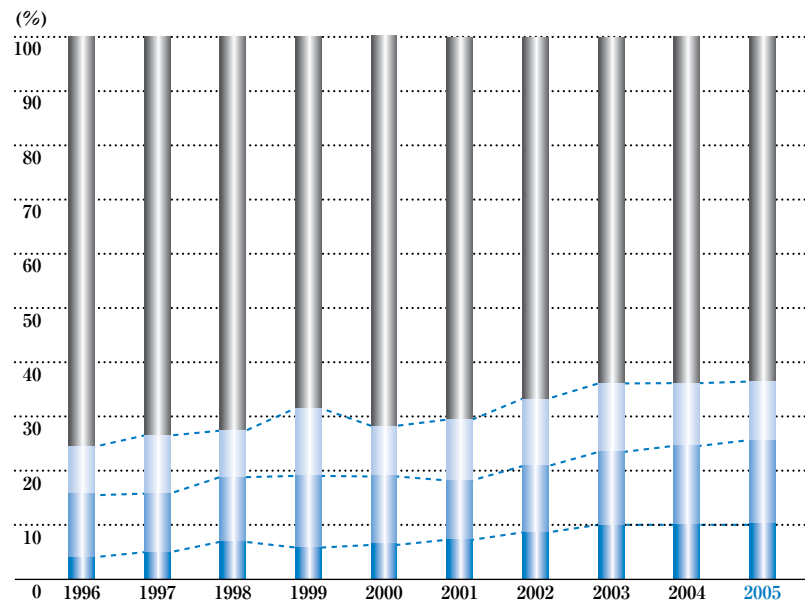
Sales Composition 部門別売上高構成

Fiscal Year ended March 31	~年3月期	1998	1999	1999	2000	2001	2002	2003	2003	2004	2005				
Control Components and Systems 制御システム機器	(Million ¥)	313,642	267,503	Industrial Automation Business インダストリアルオートメーションビジネス	(Million ¥)	245,785	215,087	227,691	186,984	202,518	Industrial Automation Business インダストリアルオートメーションビジネス	(Million ¥)	202,518	229,638	250,329
	(%)	(51.3)	(48.2)		(%)	(44.3)	(38.7)	(38.3)	(35.0)	(37.8)		(%)	(37.8)	(39.3)	(41.1)
Social Business 電子決済・公共情報システム	(Million ¥)	138,203	135,872	Electronic Components Business エレクトロニクスコンポーネツビジネス	(Million ¥)	56,673	109,661	129,444	128,193	138,845	Electronic Components Business エレクトロニクスコンポーネツビジネス	(Million ¥)	79,365	88,988	101,127
	(%)	(22.6)	(24.5)		(%)	(10.2)	(19.7)	(21.8)	(24.0)	(25.9)		(%)	(14.8)	(15.2)	(16.6)
Specialty Products 専用機器	(Million ¥)	47,263	51,338	Social Systems Business ソーシャルシステムズビジネス	(Million ¥)	135,872	128,534	141,928	124,627	116,652	Automotive Electronic Components Business オートモーティブエレクトロニクスコンポーネツビジネス	(Million ¥)	59,480	58,824	64,558
	(%)	(7.7)	(9.2)		(%)	(24.5)	(23.1)	(23.9)	(23.3)	(21.8)		(%)	(11.1)	(10.1)	(10.6)
Healthcare 健康機器	(Million ¥)	40,793	43,729	Healthcare Business ヘルスケアビジネス	(Million ¥)	43,729	42,640	39,327	40,617	42,331	Social Systems Business ソーシャルシステムズビジネス	(Million ¥)	116,652	135,997	115,205
	(%)	(6.7)	(7.9)		(%)	(7.9)	(7.7)	(6.6)	(7.6)	(7.9)		(%)	(21.8)	(23.3)	(18.9)
Open Systems オープンシステム	(Million ¥)	50,131	31,908	Others その他	(Million ¥)	73,221	59,436	55,869	53,543	34,727	Healthcare Business ヘルスケアビジネス	(Million ¥)	42,331	46,962	50,583
	(%)	(8.2)	(5.7)		(%)	(13.2)	(10.7)	(9.4)	(10.0)	(6.5)		(%)	(7.9)	(8.0)	(8.3)
Others その他	(Million ¥)	21,763	24,930	Total 合計	(Million ¥)	555,280	555,358	594,259	533,964	535,073	Others その他	(Million ¥)	34,727	24,480	26,786
	(%)	(3.5)	(4.5)		(%)	(100.0)	(100.0)	(100.0)	(100.0)	(100.0)		(%)	(6.5)	(4.2)	(4.5)
Total 合計	(Million ¥)	611,795	555,280								Total 合計	(Million ¥)	535,073	584,889	608,588
	(%)	(100.0)	(100.0)									(%)	(100.0)	(100.0)	(100.0)

※：OMRON Introduced the internal company system in April 1999.

※：99/4から社内カンパニー制を導入しています。

Sales by Region 地域別売上高構成



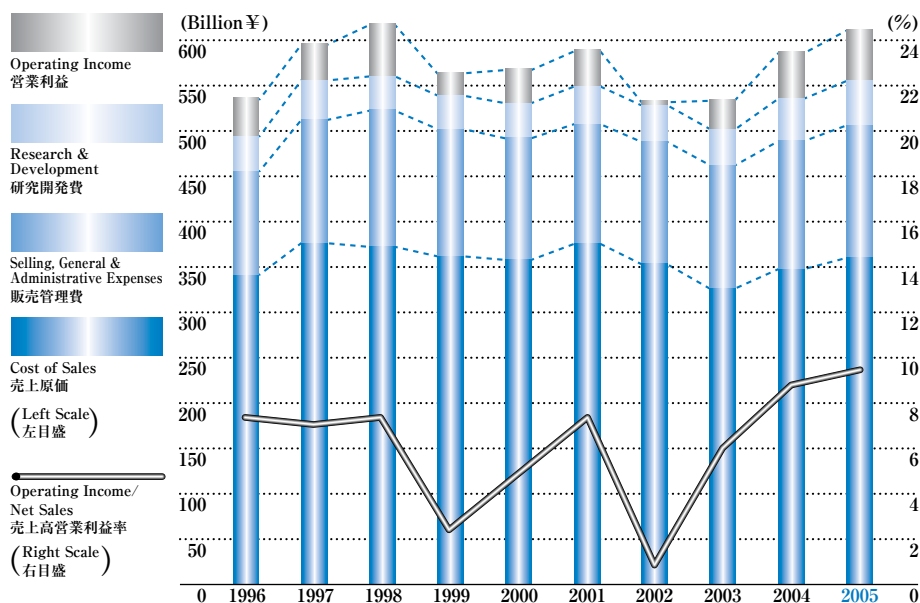
Sales by Region 地域別売上高構成

Fiscal Year ended March 31 ~年3月期		1996	1997	1998	1999	2000	2001	2002	2003	2004	2005
Japan ※	(Million ¥)	402,573	442,269	440,614	387,734	397,236	423,825	357,868	340,575	376,349	387,627
日本	(%)	(76.6)	(74.4)	(72.0)	(69.8)	(71.5)	(71.3)	(67.0)	(63.7)	(64.3)	(63.7)
North America	(Million ¥)	38,284	52,503	61,169	58,233	59,474	64,373	65,559	67,886	64,613	65,612
北米	(%)	(7.3)	(8.8)	(10.0)	(10.5)	(10.7)	(10.8)	(12.3)	(12.7)	(11.0)	(10.8)
Europe	(Million ¥)	58,802	67,134	73,901	77,218	61,297	61,038	65,305	73,513	84,286	92,239
ヨーロッパ	(%)	(11.2)	(11.3)	(12.1)	(13.9)	(11.0)	(10.3)	(12.2)	(13.7)	(14.4)	(15.2)
Asia-Pacific	(Million ¥)	25,630	32,355	36,111	32,095	37,351	45,023	45,232	53,099	59,641	63,110
アジア・パシフィック	(%)	(4.9)	(5.5)	(5.9)	(5.8)	(6.7)	(7.6)	(8.5)	(9.9)	(10.2)	(10.4)
Total	(Million ¥)	525,289	594,261	611,795	555,280	555,358	594,259	533,964	535,073	584,889	608,588
合計	(%)	(100.0)	(100.0)	(100.0)	(100.0)	(100.0)	(100.0)	(100.0)	(100.0)	(100.0)	(100.0)

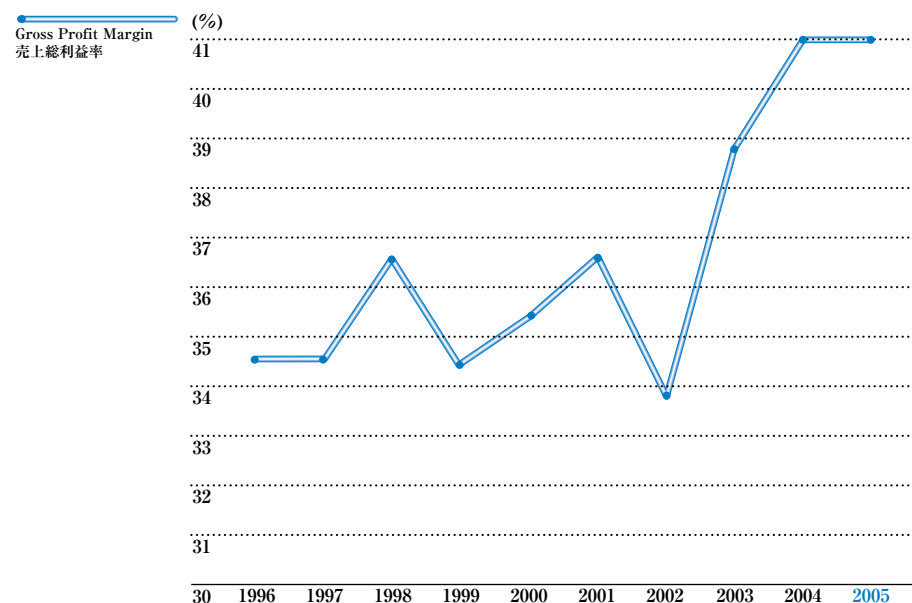
※ : Export sales from Japan directly to overseas customers are included in the sales figures for Japan. Overseas sales ratio amounts to 38.3% as of March, 2004.

※ : 海外売上高のうち、日本からの輸出は上の「日本」の中に含まれます。05年3月期の海外売上高比率は 39.9%です。

Cost Composition & Operating Income / Net Sales 費用構成, 売上高営業利益率



Gross Profit Margin 売上総利益率



Cost Composition & Operating Income / Net Sales 費用構成, 売上高営業利益率

Fiscal Year ended March 31 ~年3月期		1996	1997	1998	1999	2000	2001	2002	2003	2004	2005
Net Sales 売上高	(Million ¥)	525,289	594,261	611,795	555,280	555,358	594,259	533,964	535,073	584,889	608,588
Cost of Sales 売上原価	(Million ¥)	342,500	388,005	387,445	364,314	358,911	376,194	353,429	327,413	344,835	358,817
SG & A Expenses 販売管理費	(Million ¥)	109,117	130,163	138,404	136,734	133,662	131,203	134,907	135,112	142,157	144,219
Research & Development 研究開発費	(Million ¥)	34,433	35,188	39,914	42,383	36,605	42,513	41,407	40,235	46,494	49,441
Operating Income 営業利益	(Million ¥)	39,239	40,905	46,032	11,849	26,180	44,349	4,221	32,313	51,403	56,111
Operating Income/Net Sales 売上高営業利益率	(%)	7.5	6.9	7.5	2.1	4.7	7.5	0.8	6.0	8.8	9.2

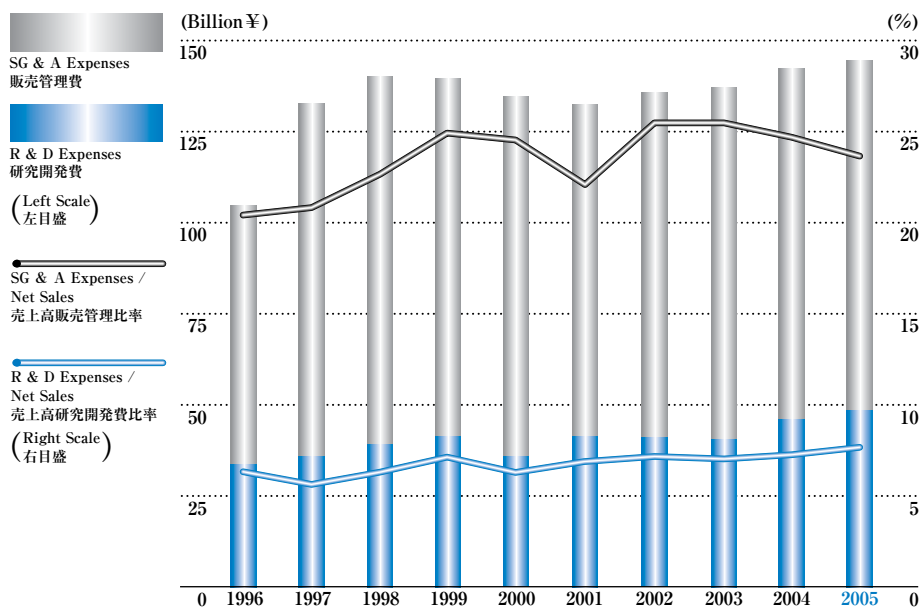
Gross Profit Margin 売上総利益率

Fiscal Year ended March 31 ~年3月期		1996	1997	1998	1999	2000	2001	2002	2003	2004	2005
Gross Profit 売上総利益	(Million ¥)	182,789	206,256	224,350	190,966	196,447	218,065	180,535	207,660	240,054	249,771
Net Sales 売上高	(Million ¥)	525,289	594,261	611,795	555,280	555,358	594,259	533,964	535,073	584,889	608,588
Gross Profit Margin 売上総利益率	(%)	34.8	34.7	36.7	34.4	35.4	36.7	33.8	38.8	41.0	41.0

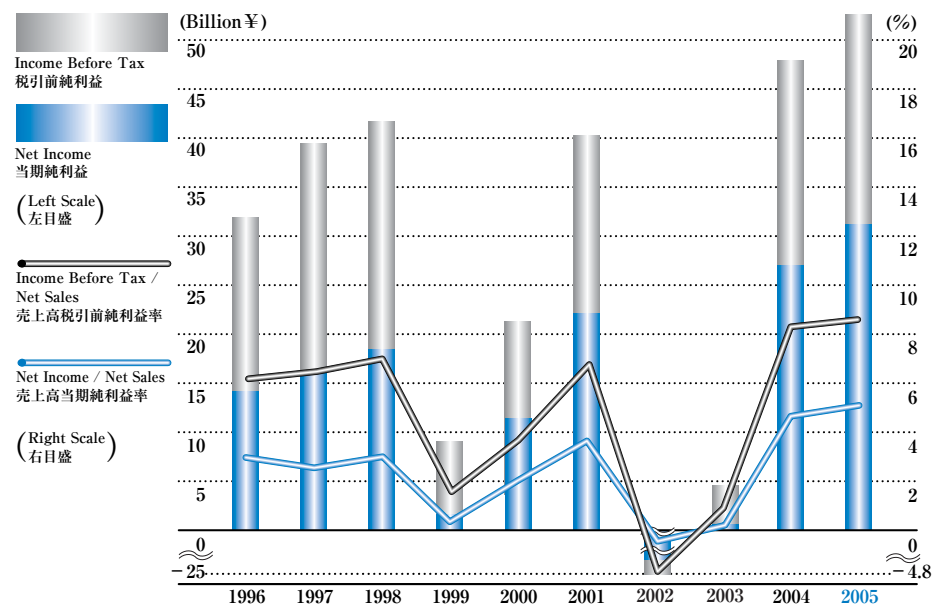
Note : Gross Profit Margin = Gross Profit / Net Sales

注 : 売上総利益率 = 売上総利益 / 売上高

SG & A Expenses / Net Sales, R & D Expenses / Net Sales 売上高販売管理費比率, 売上高研究開発費比率



Income Before Tax / Net Sales, Net Income / Net Sales 売上高税引前純利益率, 売上高当期純利益率



SG & A Expenses / Net Sales, R & D Expenses / Net Sales 売上高販売管理費比率, 売上高研究開発費比率

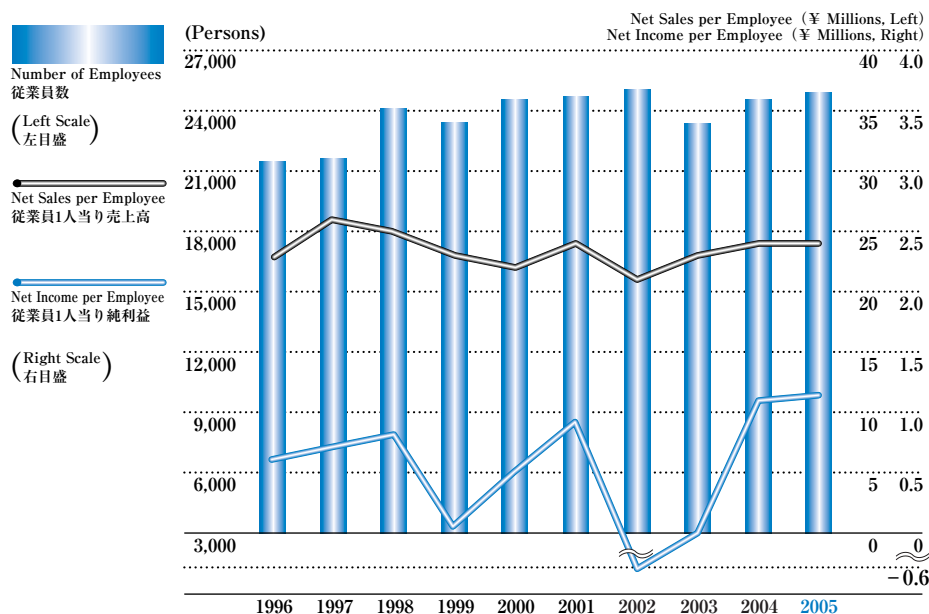
Fiscal Year ended March 31 ~年3月期		1996	1997	1998	1999	2000	2001	2002	2003	2004	2005
SG & A Expenses 販売管理費	(Million ¥)	109,117	130,163	138,404	136,734	133,662	131,203	134,907	135,112	142,157	144,219
R & D Expenses 研究開発費	(Million ¥)	34,433	35,188	39,914	42,383	36,605	42,513	41,407	40,235	46,494	49,441
Net Sales 売上高	(Million ¥)	525,289	594,261	611,795	555,280	555,358	594,259	533,964	535,073	584,889	608,588
SG & A Expenses / Net Sales 売上高販売管理費比率	(%)	20.8	21.9	22.6	24.6	24.1	22.1	25.3	25.3	24.3	23.7
R & D Expenses / Net Sales 売上高研究開発費比率	(%)	6.6	5.9	6.5	7.6	6.6	7.2	7.8	7.5	7.9	8.1

Income Before Tax / Net Sales, Net Income / Net Sales 売上高税引前純利益率, 売上高当期純利益率

Fiscal Year ended March 31 ~年3月期		1996	1997	1998	1999	2000	2001	2002	2003	2004	2005
Income Before Tax 税引前純利益	(Million ¥)	32,252	39,248	42,243	8,249	21,036	40,037	(25,373)	4,732	47,984	52,548
Net Income 当期純利益	(Million ¥)	14,587	15,739	18,300	2,174	11,561	22,297	(15,773)	511	26,811	30,176
Net Sales 売上高	(Million ¥)	525,289	594,261	611,795	555,280	555,358	594,259	533,964	535,073	584,889	608,588
Income Before Tax / Net Sales 売上高税引前純利益率	(%)	6.1	6.6	6.9	1.5	3.8	6.7	(4.8)	0.9	8.2	8.6
Net Income / Net Sales 売上高当期純利益率	(%)	2.8	2.6	3.0	0.4	2.1	3.8	(3.0)	0.1	4.6	5.0

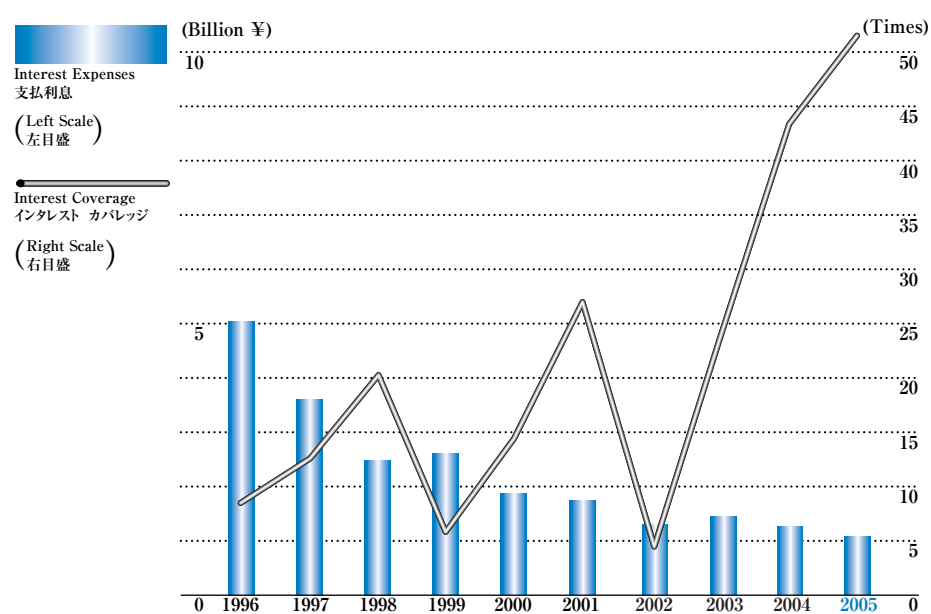
Net Sales & Net Income per Employee

従業員1人当り売上高, 当期純利益



Interest Expenses & Interest Coverage

支払利息, インタレスト カバレッジ



Net Sales & Net Income per Employee 従業員1人当り売上高, 当期純利益

Fiscal Year ended March 31 ~年3月期	1996	1997	1998	1999	2000	2001	2002	2003	2004	2005
Number of Employees 従業員数 (Persons)	22,748	23,244	24,048	23,742	24,915	25,067	25,395	23,751	24,576	25,091
Net Sales 売上高 (Million ¥)	525,289	594,261	611,795	555,280	555,358	594,259	533,964	535,073	584,889	608,588
Net Sales per Employee 従業員1人当り売上高 (Million ¥)	23	26	25	23	22	24	21	23	24	24
Net Income 当期純利益 (Million ¥)	14,587	15,739	18,300	2,174	11,561	22,297	(15,773)	511	26,811	30,176
Net Income per Employee 従業員1人当り当期純利益 (Million ¥)	0.6	0.7	0.8	0.1	0.5	0.9	(0.6)	0.0	1.1	1.2

Note : Number of Employees at the end of each fiscal year. 注 : 従業員数は各年度末数値

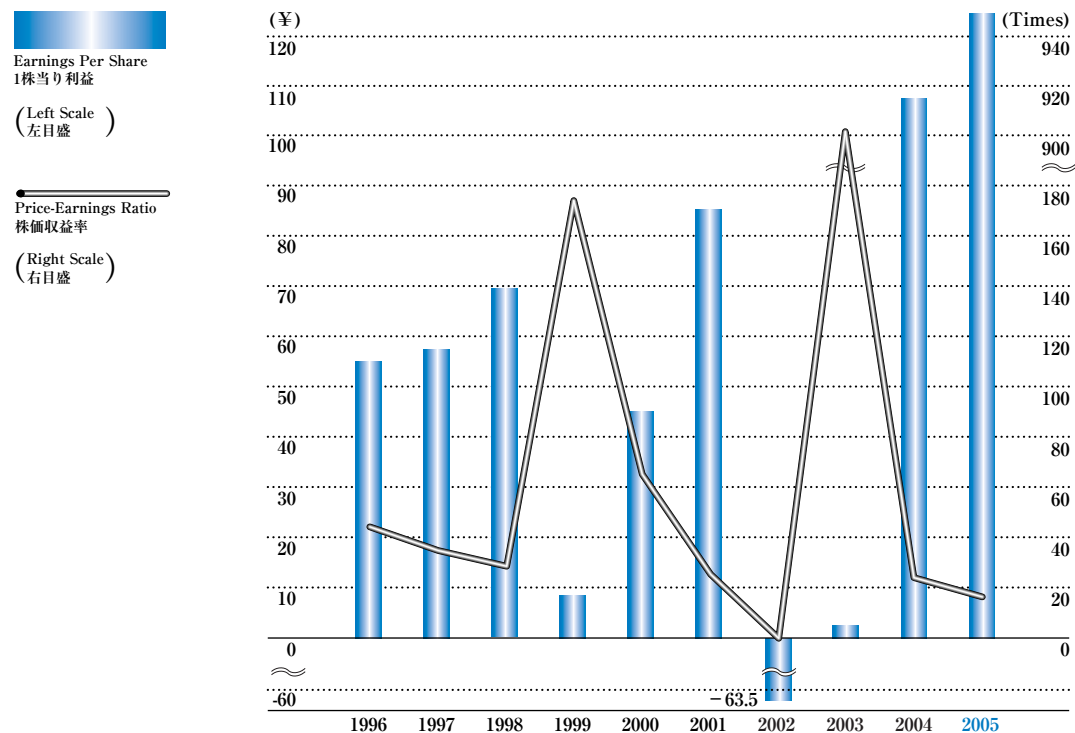
Interest Expenses & Interest Coverage 支払利息, インタレスト カバレッジ

Fiscal Year ended March 31 ~年3月期	1996	1997	1998	1999	2000	2001	2002	2003	2004	2005
Operating Income 営業利益 (Million ¥)	39,239	40,905	46,032	11,849	26,180	44,349	4,221	32,313	51,403	56,111
Interest Income 受取利息 (Million ¥)	3,031	1,967	1,730	1,656	1,147	1,620	1,069	1,082	900	1,300
Dividends Received 受取配当金 (Million ¥)	706	786	600	496	441	477	339	334	351	429
Interest Expenses 支払利息 (Million ¥)	5,075	3,557	2,412	2,518	1,897	1,731	1,291	1,430	1,217	1,084
Interest Coverage インタレスト ガバレッジ (Times)	8.47	12.27	20.05	5.56	14.64	26.83	4.36	23.59	43.27	53.36

Note : Interest Coverage = (Operating Income+Interest Income & Dividends Received)/(Interest Expenses) 注 : インタレスト カバレッジ = (営業利益+受取利息及び受取配当金) / (支払利息)

Earnings per Share & Price-Earnings Ratio

1株当り利益, 株価収益率



Earnings per Share & Price-Earnings Ratio 1株当り利益, 株価収益率

Fiscal Year ended March 31 ~年3月期		1996	1997	1998	1999	2000	2001	2002	2003	2004	2005
Earnings per Share 1株当り利益	(¥)	54.5	58.8	69.8	8.3	44.5	85.3	(63.5)	2.1	107.5	124.8
Price-Earnings Ratio 株価収益率	(Times)	42.2	36.6	28.9	175.0	64.9	23.6	-	900.6	23.3	18.5

Notes : Earnings per Share are based on the number of shares equivalents with a dilutive effect.

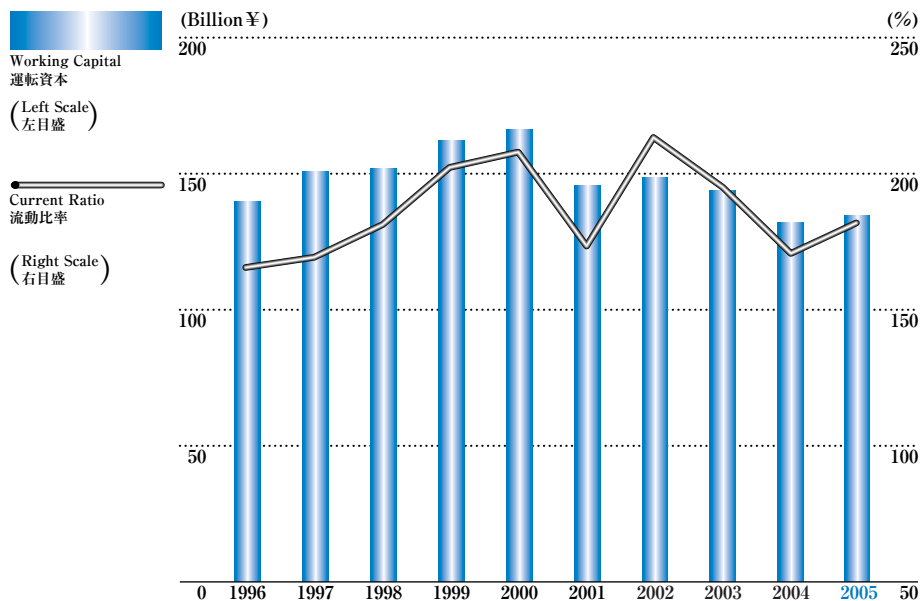
$$PER = \text{Fiscal-year-end Adjusted Stock Price} / (\text{Net Income} / \text{Number of Shares})$$

注 : 1株当り利益は、希薄化効果を考慮した株式数に基づいています。

$$\text{株価収益率} = \text{修正株価 (各年度末)} / (\text{当期純利益} / \text{株数})$$

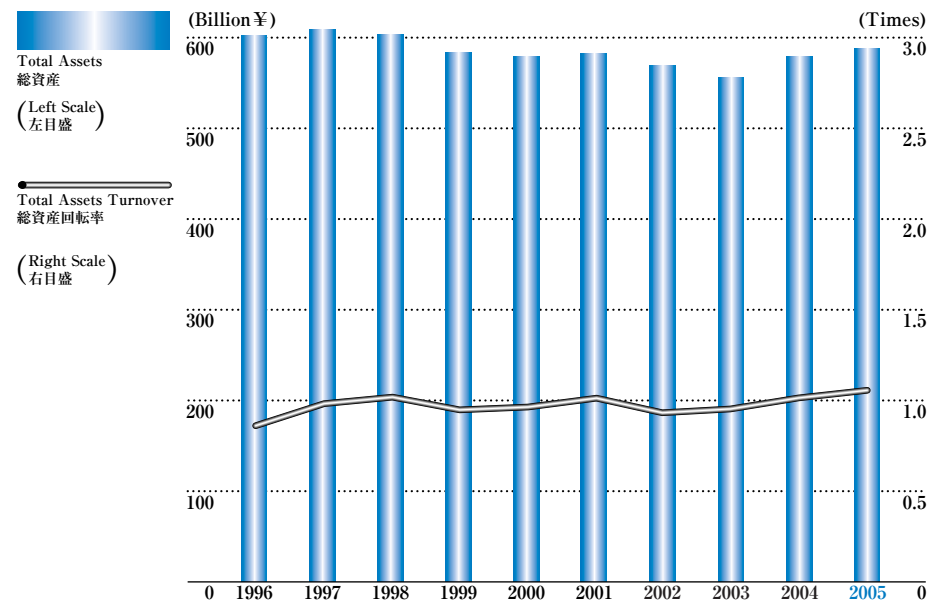
Current Ratio & Working Capital

流動比率, 運転資本



Total Assets Turnover

総資産回転率



Current Ratio & Working Capital 流動比率, 運転資本

Fiscal Year ended March 31 ~年3月期		1996	1997	1998	1999	2000	2001	2002	2003	2004	2005
Current Assets 流動資産	(Million ¥)	330,207	343,486	328,747	322,263	317,273	328,879	277,498	295,113	316,226	295,940
Current Liabilities 流動負債	(Million ¥)	190,613	193,195	176,948	157,653	147,476	183,390	129,445	151,577	184,548	162,988
Current Ratio 流動比率	(%)	173	178	186	204	215	179	214	195	171	182
Working Capital 運転資本	(Million ¥)	139,594	150,291	151,799	164,610	169,797	145,489	148,053	143,536	131,678	132,952

Note : Current Ratio = Current Assets / Current Liabilities
Working Capital = Current Assets - Current Liabilities

注：流動比率 = 流動資産 / 流動負債
運転資本 = 流動資産 - 流動負債

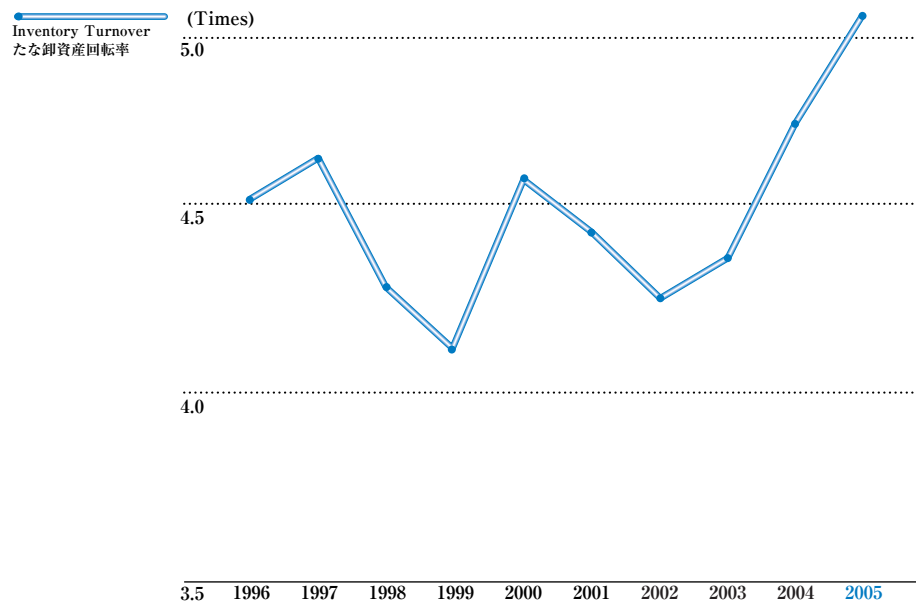
Total Assets Turnover 総資産回転率

Fiscal Year ended March 31 ~年3月期		1996	1997	1998	1999	2000	2001	2002	2003	2004	2005
Net Sales 売上高	(Million ¥)	525,289	594,261	611,795	555,280	555,358	594,259	533,964	535,073	584,889	608,588
Total Assets 総資産	(Million ¥)	600,172	611,930	602,030	586,858	580,038	586,317	571,255	558,383	579,836	588,851
Total Assets Turnover 総資産回転率	(Times)	0.88	0.97	1.02	0.95	0.96	1.01	0.93	0.96	1.01	1.03

Notes : Total Assets are based on the average of the beginning and end of each fiscal year.
Total Assets Turnover = Net Sales / Total Assets

注：総資産は期中平均
総資産回転率 = 売上高 / 総資産

Inventory Turnover たな卸資産回転率



Inventory Turnover たな卸資産回転率

Fiscal Year ended March 31 ~年3月期		1996	1997	1998	1999	2000	2001	2002	2003	2004	2005
Cost of Sales 売上原価	(Million ¥)	342,500	388,005	387,445	364,314	358,911	376,194	353,429	327,413	344,835	358,817
Inventory たな卸資産	(Million ¥)	75,892	83,237	90,474	87,258	78,671	84,700	83,105	75,032	72,894	69,463
Inventory Turnover たな卸資産回転率	(Times)	4.51	4.66	4.28	4.18	4.56	4.44	4.25	4.36	4.73	5.17

Notes : Inventory is based on the average of the beginning and end of each fiscal year.
Inventory Turnover = Cost of Sales / Inventory

注 : たな卸資産は期中平均
たな卸資産回転率 = 売上原価 / たな卸資産

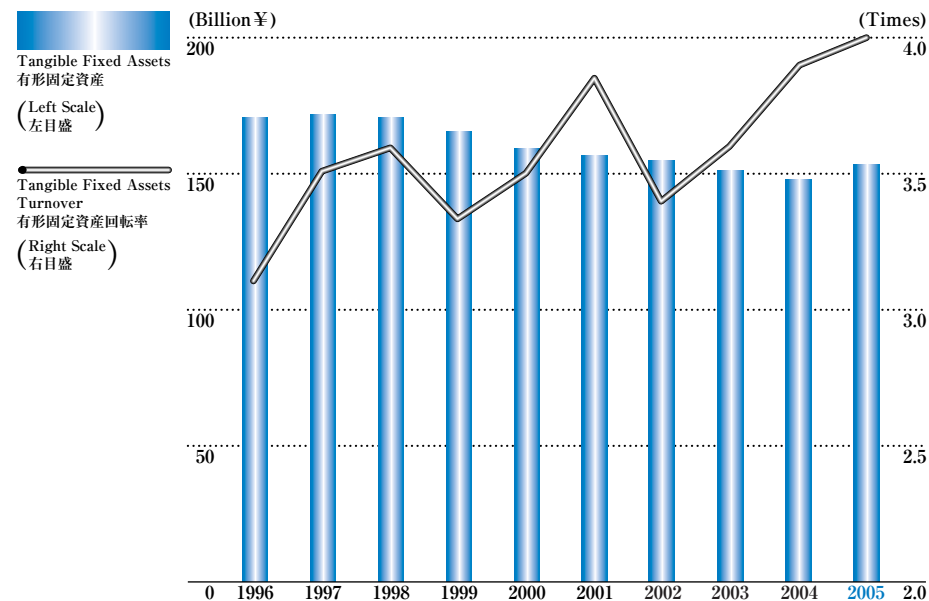
Tangible Fixed Assets Turnover 有形固定資産回転率

Fiscal Year ended March 31 ~年3月期		1996	1997	1998	1999	2000	2001	2002	2003	2004	2005
Net Sales 売上高	(Million ¥)	525,289	594,261	611,795	555,280	555,358	594,259	533,964	535,073	584,889	608,588
Tangible Fixed Assets 有形固定資産	(Million ¥)	170,453	171,553	170,446	166,689	159,465	157,577	155,707	150,670	149,884	152,706
Tangible Fixed Assets Turnover 有形固定資産回転率	(Times)	3.1	3.5	3.6	3.3	3.5	3.8	3.4	3.6	3.9	4.0

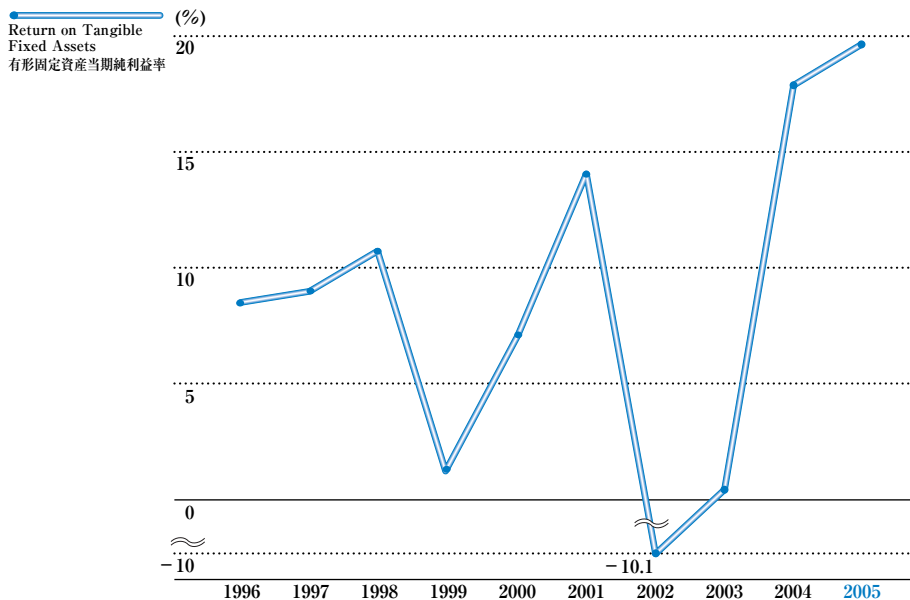
Notes : Tangible Fixed Assets are based on the average of the beginning and end of each fiscal year.
Tangible Fixed Assets Turnover = Net Sales / Tangible Fixed Assets

注 : 有形固定資産は、期中平均
有形固定資産回転率 = 売上高 / 有形固定資産

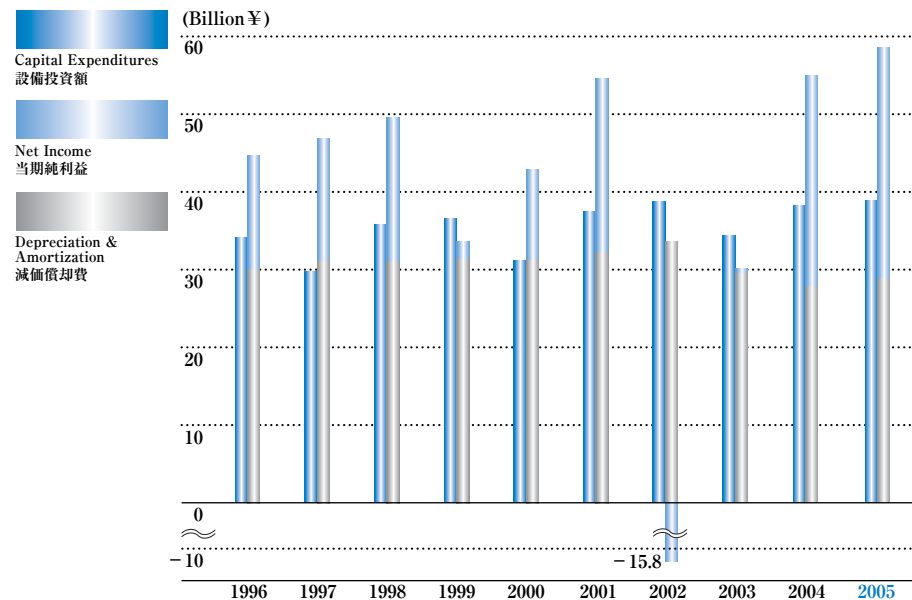
Tangible Fixed Assets Turnover 有形固定資産回転率



Return on Tangible Fixed Assets 有形固定資産当期純利益率



Capital Expenditures & Cash Flows 設備投資額, キャッシュ・フロー



Return on Tangible Fixed Assets 有形固定資産当期純利益率

Fiscal Year ended March 31 ~年3月期		1996	1997	1998	1999	2000	2001	2002	2003	2004	2005
Net Income 当期純利益	(Million ¥)	14,587	15,739	18,300	2,174	11,561	22,297	(15,773)	511	26,811	30,176
Tangible Fixed Assets 有形固定資産	(Million ¥)	170,453	171,553	170,446	166,689	159,465	157,577	155,707	150,670	149,884	152,706
Return on Tangible Fixed Assets 有形固定資産当期純利益率	(%)	8.6	9.2	10.7	1.3	7.2	14.1	(10.1)	0.3	17.9	19.8

Notes : Tangible Fixed Assets are based on the average of the beginning and end of each fiscal year.
Return on Tangible Fixed Assets = Net Income / Tangible Fixed Assets

注：有形固定資産は期中平均
有形固定資産当期純利益率 = 当期純利益 / 有形固定資産

Capital Expenditures & Cash Flows 設備投資額, キャッシュ・フロー

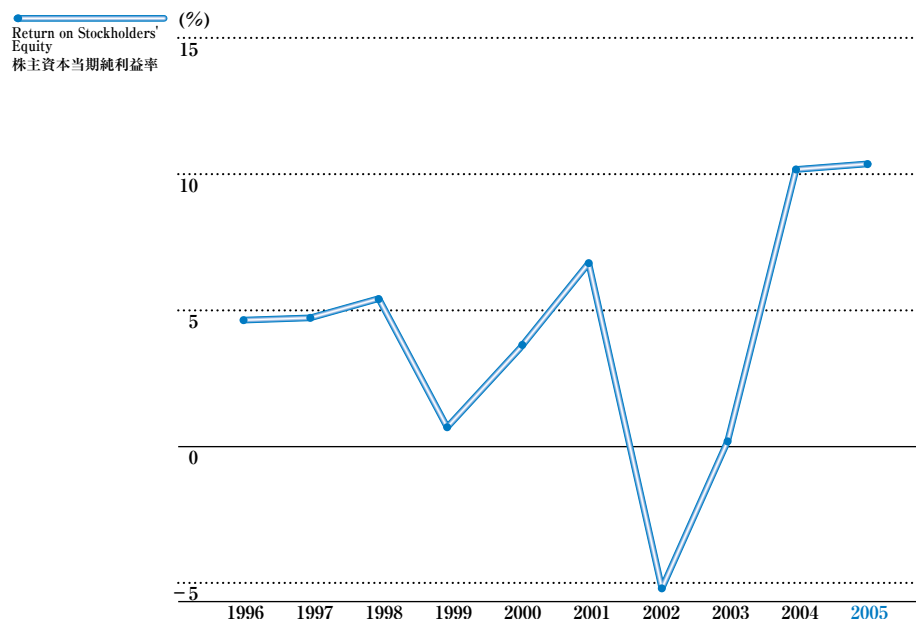
Fiscal Year ended March 31 ~年3月期		1996	1997	1998	1999	2000	2001	2002	2003	2004	2005
Capital Expenditures 設備投資額	(Million ¥)	34,079	29,956	35,896	36,696	31,146	37,583	38,896	34,454	38,115	38,579
Net Income 当期純利益	(Million ¥)	14,587	15,739	18,300	2,174	11,561	22,297	(15,773)	511	26,811	30,176
Depreciation & Amortization 減価償却費	(Million ¥)	30,196	31,234	31,129	31,396	31,445	32,217	33,569	29,676	27,662	28,642
Cash Flows キャッシュ・フロー	(Million ¥)	44,783	46,973	49,429	33,570	43,006	54,514	17,796	30,187	54,473	58,818

Note : Cash Flows = Net Income + (Depreciation & Amortization)

注：キャッシュ・フロー = 当期純利益 + 減価償却費

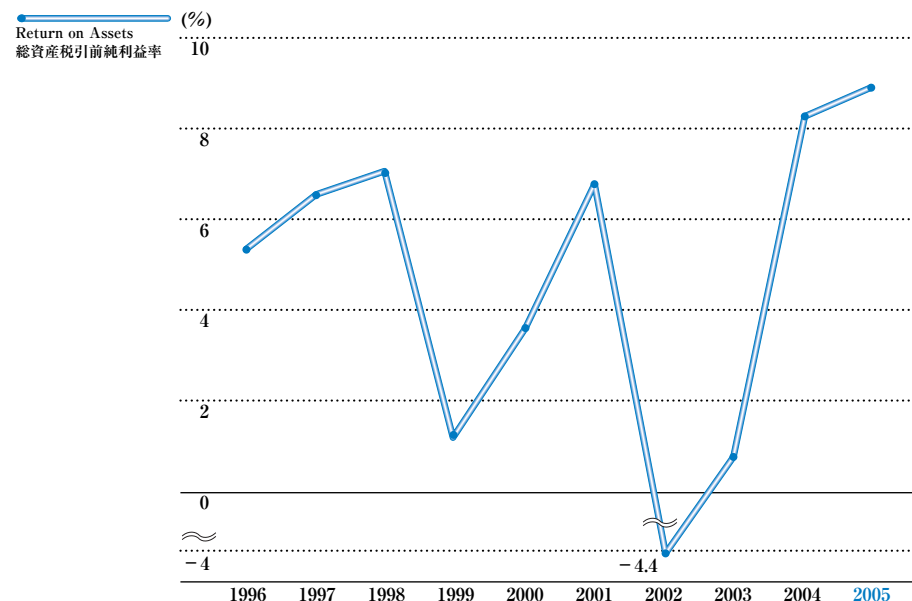
Return on Stockholders' Equity

株主資本当期純利益率



Return on Assets

総資産税引前純利益率



Return on Stockholders' Equity 株主資本当期純利益率

Fiscal Year ended March 31 ~年3月期		1996	1997	1998	1999	2000	2001	2002	2003	2004	2005
Net Income 当期純利益	(Million ¥)	14,587	15,739	18,300	2,174	11,561	22,297	(15,773)	511	26,811	30,176
Stockholders' Equity 株主資本	(Million ¥)	307,615	325,648	338,084	332,162	328,660	331,010	312,096	274,922	263,160	290,260
Return on Stockholders' Equity 株主資本当期純利益率	(%)	4.7	4.8	5.4	0.7	3.5	6.7	(5.1)	0.2	10.2	10.4

Notes : Stockholders' Equity is based on the average of the beginning and end of each fiscal year.
Return on Stockholders' Equity = Net Income / Stockholders' Equity

注：株主資本は期中平均
株主資本当期純利益率 = 当期純利益 / 株主資本

Return on Assets 総資産税引前純利益率

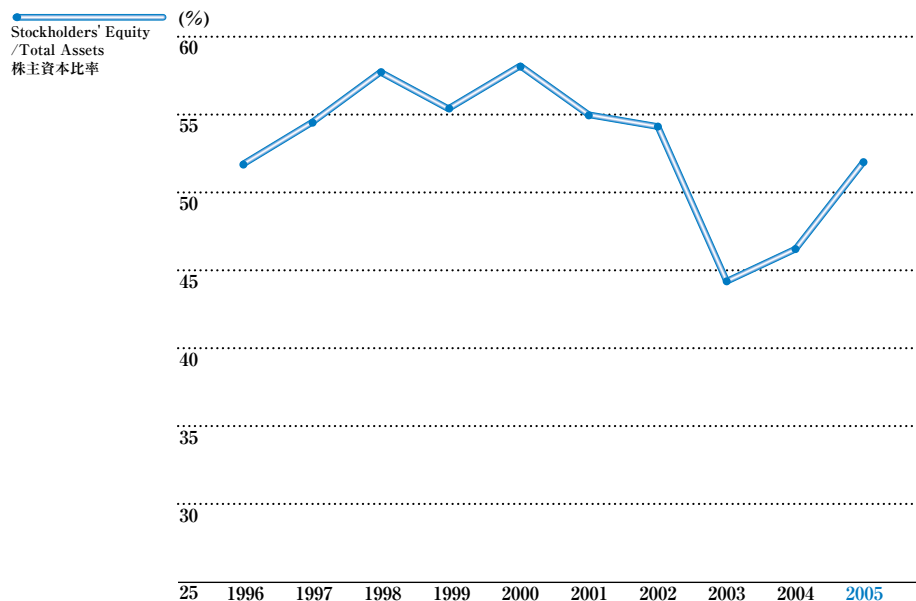
Fiscal Year ended March 31 ~年3月期		1996	1997	1998	1999	2000	2001	2002	2003	2004	2005
Income Before Tax 税引前純利益	(Million ¥)	32,252	39,248	42,243	8,249	21,036	40,037	(25,373)	4,732	47,984	52,548
Total Assets 総資産	(Million ¥)	600,172	611,930	602,030	586,858	580,038	586,317	571,255	558,383	579,836	588,851
Return on Assets 総資産税引前純利益率	(%)	5.4	6.4	7.0	1.4	3.6	6.8	(4.4)	0.8	8.3	8.9

Notes : Total Assets are based on the average of the beginning and end of each fiscal year.
Return on Assets = Income Before Tax / Total Assets

注：総資産は期中平均
総資産税引前純利益率 = 税引前純利益 / 総資産

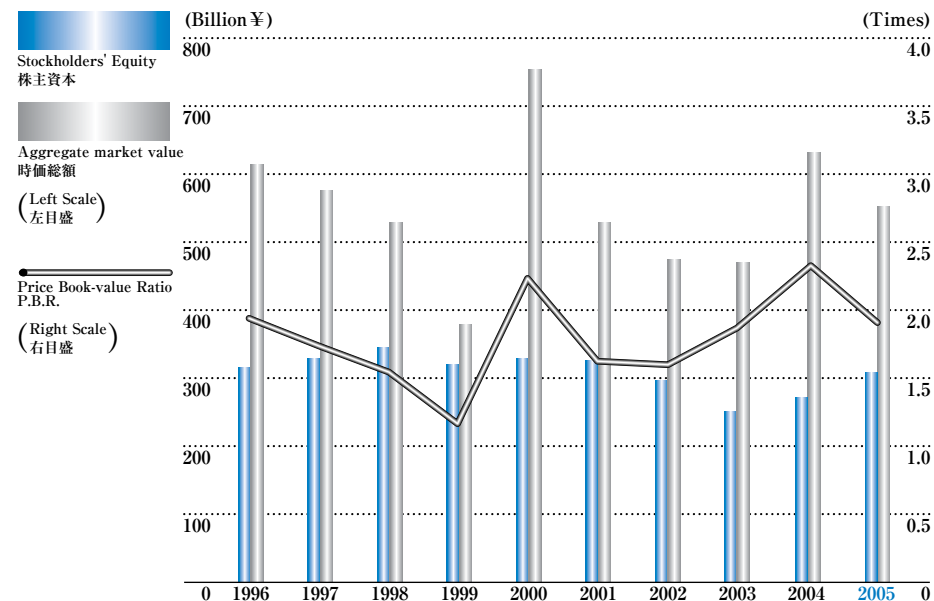
Stockholders' Equity / Total Assets

株主資本比率



Aggregate market value & Price Book-value Ratio

時価総額, 株価純資産倍率 (P. B. R.)



Stockholders' Equity / Total Assets 株主資本比率

Fiscal Year ended March 31 ~年3月期		1996	1997	1998	1999	2000	2001	2002	2003	2004	2005
Debt 負債	(Million ¥)	294,735	277,828	250,063	259,328	243,427	267,186	251,132	315,789	317,563	279,619
Debt / Equity Ratio デットエクイティレシオ	(Times)	0.926	0.834	0.729	0.807	0.724	0.820	0.842	1.255	1.156	0.914
Stockholders' Equity 株主資本	(Million ¥)	318,194	333,102	343,066	321,258	336,062	325,958	298,234	251,610	274,710	305,810
Total Assets 総資産	(Million ¥)	612,929	610,930	593,129	580,586	579,489	593,144	549,366	567,399	592,273	585,429
Stockholders' Equity / Total Assets 株主資本比率	(%)	51.9	54.5	57.8	55.3	58.0	55.0	54.3	44.3	46.4	52.2

Notes : Debt, Stockholders' Equity at the end of each fiscal year. Debt / Equity Ratio = Debt / Stockholders' Equity 注：負債・株主資本は各年度末数値 デットエクイティレシオ=負債/株主資本

Aggregate market value & Price Book-value Ratio 時価総額, 株価純資産倍率 (P. B. R.)

Fiscal Year ended March 31 ~年3月期		1996	1997	1998	1999	2000	2001	2002	2003	2004	2005
Stockholders' Equity 株主資本	(Million ¥)	318,194	333,102	343,066	321,258	336,062	325,958	298,234	251,610	274,710	305,810
Aggregate market value 時価総額	(Million ¥)	615,952	576,636	529,457	380,519	749,863	525,813	476,932	460,228	625,573	556,966
Number of Shares 株数		262,107,214	262,107,214	262,107,214	257,107,214	256,802,236	248,611,236	248,272,947	242,864,183	239,224,823	238,019,781
Stockholders' Equity per Share 1株当り株主資本	(¥)	1,214	1,271	1,309	1,250	1,309	1,311	1,201	1,036	1,148	1,285
Adjusted Stock Price 修正株価	(¥)	2,350	2,200	2,020	1,480	2,920	2,115	1,921	1,895	2,615	2,340
Price Book-value Ratio P.B.R. 株価純資産倍率	(Times)	1.94	1.73	1.54	1.18	2.23	1.61	1.60	1.83	2.28	1.82

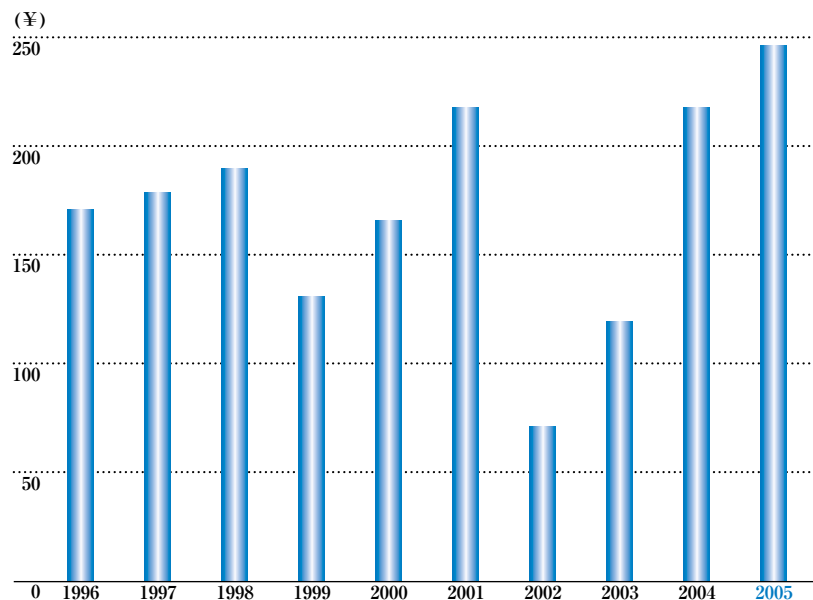
Notes : Stockholders' Equity is based on Common Shares. Number of Shares, Stockholders' Equity and Adjusted Stock Price at the end of each fiscal year.

注：株主資本は発行済普通株式に基づいています。株数、株主資本、修正株価は各年度末数値

Cash Flows per Share

1株当りキャッシュ・フロー

Cash Flows per Share
1株当りキャッシュ・フロー



Cash Flows per Share 1株当りキャッシュ・フロー

Fiscal Year ended March 31 ~年3月期	1996	1997	1998	1999	2000	2001	2002	2003	2004	2005
Cash Flows キャッシュ・フロー (Million ¥)	44,783	46,973	49,429	33,570	43,006	54,514	17,796	30,187	54,473	58,818
Number of Shares 株数	262,107,214	262,107,214	262,107,214	257,107,214	256,802,236	248,611,236	248,272,947	242,864,183	239,224,823	238,019,781
Cash Flows per Share 1株当りキャッシュ・フロー (¥)	171	179	189	131	167	219	72	124	228	247

Notes : Cash Flows per Share are based on Common Shares.
Number of Shares at the end of each fiscal year.
Cash Flows = Net Income + (Depreciation & Amortization)

注：1株当りキャッシュ・フローは、発行済普通株式に基づいています。
株数は各年度末数値
キャッシュ・フロー = 当期純利益 + 減価償却費

Consolidated Statements of Operations 連結損益計算書

(Million ¥)

Years ended March 31	1996	1997	1998	1999	2000	2001	2002	2003	2004	2005
NET SALES 売上高	525,289	594,261	611,795	555,280	555,358	594,259	533,964	535,073	584,889	608,588
COSTS AND EXPENSES : 売上原価及び費用										
Cost of sales 売上原価	342,500	388,005	387,445	364,314	358,911	376,194	353,429	327,413	344,835	358,817
Selling general and administrative 販売費及び一般管理費	109,117	130,163	138,404	136,734	133,662	131,203	134,907	135,112	142,157	144,219
Research and development 試験研究開発費	34,433	35,188	39,914	42,383	36,605	42,513	41,407	40,235	46,494	49,441
Interest expense (income), net 支払利息及び受取利息-純額-	2,044	1,591	682	862	750	111	223	348	317	-216
Foreign exchange loss (gain) 為替差損益	5,027	860	4,419	2,766	2,841	1,389	1,506	575	1,254	75
Other, net その他費用(収益) -純額-	(84)	(794)	(1,312)	(28)	1,553	2,812	27,865	26,658	1,848	3,704
Total 合計	493,037	555,013	569,552	547,031	534,322	554,222	559,337	530,341	536,905	556,040
INCOME BEFORE INCOME TAXES, MINORITY INTERESTS, EXTRAORDINARY ITEM AND CUMULATIVE EFFECT OF ACCOUNTING CHANGE										
法人税等・少数株主損益、特別項目及び会計原則変更による累積影響額調整前純利益	32,252	39,248	42,243	8,249	21,036	40,037	(25,373)	4,732	47,984	52,548
INCOME TAXES : 法人税等										
Current 当期税額	18,107	22,915	24,579	12,426	14,857	22,720	6,783	7,851	13,527	20,393
Deferred 繰延税額	(337)	342	(1,305)	(8,591)	(5,809)	(5,402)	(16,131)	(3,915)	7,235	1,715
Tax effects of subsidiaries' operating loss carryforwards 子会社での繰越欠損金の期間調整税額	(731)	(305)	(176)	(142)	—	—	—	—	—	—
Adjustment of Deferred Tax Assets and Liabilities for Enacted Changes in Tax Rate 標準税率の変更影響額	—	—	273	2,351	—	—	—	—	—	—
Total 合計	17,039	22,952	23,371	6,044	9,048	17,318	(9,348)	3,936	20,762	22,108
INCOME BEFORE MINORITY INTERESTS, EXTRAORDINARY ITEM AND CUMULATIVE EFFECT OF ACCOUNTING CHANGE										
少数株主損益、特別項目及び会計原則変更による累積影響額調整前純利益	15,213	16,296	18,468	2,205	11,988	22,719	(16,025)	796	27,222	30,440
MINORITY INTERESTS 少数株主損益	626	557	168	31	427	422	132	285	411	264
INCOME BEFORE EXTRAORDINARY ITEM AND CUMULATIVE EFFECT OF ACCOUNTING CHANGE										
特別項目及び会計原則変更による累積影響額調整前純利益	14,587	15,739	18,300	2,174	11,561	22,297	(16,157)	511	26,811	30,176
EXTRAORDINARY ITEM : 特別項目										
Reduction of income taxes arising from utilization of subsidiaries' operating loss carryforwards 子会社での繰越欠損金の利用により生じた法人税等の軽減額	—	—	—	—	—	—	—	—	—	—
INCOME BEFORE CUMULATIVE EFFECT OF ACCOUNTING CHANGE										
会計原則変更による累積影響額調整前純利益	14,587	15,739	18,300	2,174	11,561	22,297	(16,157)	511	26,811	30,176
CUMULATIVE EFFECT OF ACCOUNTING CHANGE										
会計原則変更による累積影響額	—	—	—	—	—	—	*1 384	0	0	0
NET INCOME 当期純利益	14,587	15,739	18,300	2,174	11,561	22,297	(15,773)	511	26,811	30,176
										(¥)
NET INCOME PER SHARE (Basic) 1株当り当期純利益	55.7	60.1	71.4	8.3	45.0	87.4	(63.5)	2.1	110.7	126.5
(Diluted) 希薄化後1株当り当期純利益	54.5	58.8	69.8	8.3	44.5	85.3	—	—	107.5	124.8
CASH DIVIDENDS PER SHARE APPLICABLE TO PERIOD 現金配当金	13.0	13.0	13.0	13.0	13.0	13.0	13.0	10.0	20	24

*1 Cumulative effect on the adoption of SFAS No.133 and 138, accounting for derivative instruments and hedging activities.

*1 デリバティブ及びヘッジに関する新会計基準 (SFAS No.133及び138) 適用による期首累積影響額

Consolidated Balance Sheets 連結貸借対照表

(Million ¥)

Years ended March 31	1996	1997	1998	1999	2000	2001	2002	2003	2004	2005
ASSETS 資産の部										
CURRENT ASSETS : 流動資産										
Cash and cash equivalents 現金及び現金同等物	87,864	79,288	68,365	88,900	88,670	85,621	70,779	79,919	95,059	80,619
Short-term investments 短期投資	24,065	29,035	6,142	1,054	6,300	—	—	—	—	—
Notes and accounts receivable, trade 受取手形及び売掛金	124,977	133,771	138,149	134,183	130,355	133,798	114,906	113,595	124,891	124,409
Allowance for doubtful receivables 貸倒引当金	(2,853)	(3,023)	(3,301)	(2,450)	(2,001)	(2,194)	(2,755)	(3,484)	(2,823)	(2,757)
Inventories たな卸資産	80,508	85,966	94,981	79,535	77,807	91,593	74,617	75,446	70,341	68,585
Deferred income taxes 繰延税金	10,707	10,139	11,798	11,336	9,026	12,186	13,001	20,139	18,458	17,240
Other current assets その他流動資産	4,939	8,310	12,613	9,705	7,116	7,875	6,950	9,498	10,300	7,844
Total current assets 流動資産合計	330,207	343,486	328,747	322,263	317,273	328,879	277,498	295,113	316,226	295,940
PROPERTY, PLANT AND EQUIPMENT : 有形固定資産										
Land 土地	53,734	51,169	50,166	50,598	51,082	50,479	46,979	46,094	45,583	43,794
Buildings 建物及び構築物	103,702	107,036	107,974	111,263	110,330	113,414	108,547	99,455	107,852	110,367
Machinery and equipment 機械その他	139,307	143,736	143,809	135,197	129,639	132,945	133,672	137,710	141,932	143,111
Construction in progress 建設仮勘定	2,198	2,746	4,124	4,326	3,933	5,680	8,642	11,313	3,760	5,946
Total 小計	298,941	304,687	306,073	301,384	294,984	302,518	297,840	294,572	299,127	303,218
Accumulated depreciation 減価償却累計額	(126,246)	(134,277)	(135,591)	(138,489)	(138,950)	(143,399)	(145,546)	(145,527)	(148,404)	(148,529)
Net property, plant and equipment 有形固定資産合計	172,695	170,410	170,482	162,895	156,034	159,119	152,294	149,045	150,723	154,689
OTHER ASSETS : 投資その他の資産										
Investments in and advances to associates 関連会社に対する投資及び貸付金	1,924	2,098	1,843	1,770	2,013	853	785	1,187	1,245	17,343
Investment securities 投資有価証券	71,170	59,710	55,336	54,114	69,397	57,500	43,431	30,861	50,331	49,764
Leasehold deposits 施設借用保証金	12,116	11,809	11,730	12,035	10,608	11,159	10,653	9,173	8,777	8,595
Deferred income taxes 繰延税金	7,410	6,945	7,507	8,834	6,415	17,986	43,901	64,305	47,301	41,499
Other その他の資産	17,407	16,472	17,484	18,675	17,749	17,648	20,804	17,715	17,670	17,599
Total other assets 投資その他の資産合計	110,027	97,034	93,900	95,428	106,182	105,146	119,574	123,241	125,324	134,800
TOTAL 資産合計	612,929	610,930	593,129	580,586	579,489	593,144	549,366	567,399	592,273	585,429

Consolidated Balance Sheets 連結貸借対照表

(Million ¥)

Years ended March 31	1996	1997	1998	1999	2000	2001	2002	2003	2004	2005
LIABILITIES AND STOCKHOLDERS' EQUITY 負債・資本の部										
CURRENT LIABILITIES : 流動負債										
Bank loans 短期借入金	11,564	15,302	12,578	27,946	10,242	8,916	14,723	18,948	15,444	12,424
Notes and accounts payable, trade 支払手形・買掛金・未払金	80,307	95,552	88,756	70,971	78,467	82,225	60,000	67,773	79,345	75,866
Accrued expenses 未払費用	20,865	22,478	23,117	20,924	21,430	24,484	22,748	24,394	26,146	26,701
Income taxes 未払税金	11,472	16,236	15,011	9,020	11,334	14,797	3,832	4,095	10,114	12,724
Other current liabilities その他流動負債	24,203	25,603	29,020	26,625	24,741	26,628	26,950	24,370	23,463	24,770
Current portion of long-term debt 一年以内に返済予定の長期債務	42,202	18,024	8,466	2,167	1,262	26,340	1,192	11,997	30,036	10,503
Total current liabilities 流動負債合計	190,613	193,195	176,948	157,653	147,476	183,390	129,445	151,577	184,548	162,988
LONG-TERM DEBT : 長期借入金	55,349	41,821	33,500	56,610	57,968	31,957	42,796	40,315	11,207	1,832
DEFERRED INCOME TAXES : 繰延税金	17,195	13,145	11,335	908	3,725	23	436	643	483	1,199
TERMINATION AND RETIREMENT BENEFITS : 退職給付引当金	23,693	22,909	24,913	40,076	30,629	48,929	75,367	120,730	119,738	111,988
OTHER LONG-TERM LIABILITIES : その他固定負債	1,974	108	367	1,525	1,114	370	291	52	140	63
MINORITY INTERESTS IN SUBSIDIARIES : 少数株主持分	5,911	6,650	3,000	2,556	2,515	2,517	2,797	2,472	1,447	1,549
Total liabilities 負債合計	294,735	277,828	250,063	259,328	243,427	267,186	251,132	315,789	317,563	279,619
STOCKHOLDERS' EQUITY : 資本										
Common stock 資本金	64,079	64,079	64,079	64,079	64,082	64,082	64,082	64,082	64,082	64,100
Additional paid-in capital 資本剰余金	98,702	98,702	98,702	98,702	98,705	98,705	98,705	98,705	98,705	98,726
Legal reserve 利益準備金	5,473	5,963	6,314	6,811	7,250	7,652	7,660	7,619	7,450	7,649
Retained earnings その他剰余金	147,900	159,741	174,686	166,020	173,804	174,077	155,069	153,134	175,296	199,551
Accumulated other comprehensive income その他の包括利益累計額	2,040	4,617	(715)	(14,012)	(7,168)	(17,346)	(25,363)	(59,909)	(50,559)	(41,009)
Cumulative translation adjustments 為替換算調整額	(9,057)	(3,320)	(5,912)	(11,954)	(20,998)	(13,712)	(7,402)	(9,407)	(15,625)	(10,554)
Minimum pension liability adjustments 退職年金負債調整額	(4,639)	(2,146)	(1,401)	(7,138)	—	(7,251)	(21,224)	(48,708)	(45,238)	(41,123)
Net unrealized gain on securities 未実現有価証券評価損益	15,736	10,083	6,598	5,080	13,830	3,617	3,331	(1,716)	10,087	10,909
Unrealized gains (losses) on derivative instruments デリバティブ純利益	—	—	—	—	—	—	(68)	(78)	217	(241)
Treasury stock 自己株式	—	—	—	(342)	(611)	(1,212)	(1,919)	(12,021)	(20,264)	(23,207)
Total stockholders' equity 資本合計	318,194	333,102	343,066	321,258	336,062	325,958	298,234	251,610	274,710	305,810
TOTAL 負債・資本合計	612,929	610,930	593,129	580,586	579,489	593,144	549,366	567,399	592,273	585,429

Consolidated Statements of Cash Flows 連結キャッシュ・フロー計算書

(Million ¥)

Years ended March 31	1996	1997	1998	1999	2000	2001	2002	2003	2004	2005
OPERATING ACTIVITIES : 営業活動における資金収支										
Net Income 当期純利益	14,587	15,739	18,300	2,174	11,561	22,297	(15,773)	511	26,811	30,176
Adjustments to reconcile net income to net cash provided by operating activities : 営業活動における資金収支と当期純利益の調整										
Depreciation and amortization 減価償却費	30,196	31,234	31,129	31,396	31,445	32,217	33,569	29,676	27,662	28,642
Loss on impairment of property, plant and equipment 固定資産の減損	677	771	268	—	—	—	6,815	4,231	41	614
Loss on impairment of investment securities and other assets 投資有価証券及びその他の資産の減損	—	—	—	—	2,072	2,460	17,199	2,269	2,413	366
Termination and retirement benefits 退職給付引当金の増減	(154)	4,574	2,004	4,178	5,778	4,990	2,616	(1,087)	5,016	1,956
Deferred income taxes 繰延税金	(1,242)	(62)	(230)	(6,358)	(5,809)	(5,402)	(16,131)	(3,915)	7,235	1,715
Noncash interest expense, net 資金収支を伴わない支払利息	—	—	—	—	—	—	—	—	—	—
Minority interests 少数株主利益	626	557	168	31	427	422	132	285	411	264
Loss on sale of business entities 子会社・事業の売却による損	—	—	—	286	—	—	—	(1,550)	494	—
Change in assets and liabilities, net of effects of acquisitions : 資産・負債の増減(会社買収による影響を除く)										
Notes and accounts receivable — trade 受取手形及び売掛金	(16,936)	(7,927)	(3,537)	2,025	2,507	(5,593)	19,402	1,363	(10,853)	(2,762)
Inventories たな卸資産	(7,289)	(4,163)	(8,412)	10,529	(534)	(13,320)	17,403	(1,918)	4,105	(1,964)
Other assets その他の資産	494	(2,080)	(7,004)	5,306	(3,030)	875	2,279	214	891	934
Notes and accounts payable — trade 支払手形及び買掛金	5,841	12,000	(4,315)	(11,969)	10,062	3,620	(22,291)	9,770	10,976	(4,908)
Income taxes payable 未払税金	1,455	4,711	(1,998)	(5,967)	2,633	3,438	(10,992)	232	6,015	2,423
Accrued expenses and other 未払費用及びその他流動負債	(706)	3,232	4,425	(970)	(585)	4,140	(1,082)	130	(52)	2,114
Other — net その他	(776)	(1,417)	1,288	(1,078)	3,399	652	541	1,643	(478)	1,506
Total adjustments 調整計	12,186	41,430	13,786	27,409	48,365	28,499	49,460	41,343	53,876	30,900
Net cash provided by operating activities 営業活動における資金収支合計	26,773	57,169	32,086	29,583	59,926	50,796	33,687	41,854	80,687	61,076
INVESTING ACTIVITIES : 投資活動における資金収支										
Net proceeds (purchase) of short-term investments and investment securities 短期投資および投資有価証券の増減	24,757	(2,233)	19,858	4,505	(5,124)	3,985	(3,070)	649	277	1,600
Capital expenditures 有形固定資産の取得	(34,079)	(29,956)	(35,896)	(36,696)	(31,146)	(37,583)	(38,896)	(34,454)	(38,115)	(38,579)
Acquisition of businesses, net of cash acquired 会社買収および売却	—	—	—	1,998	—	—	—	—	—	—
Increase in leasehold deposits 施設借入金保証金の増加	57	285	5	(527)	1,456	(538)	506	592	312	221
Proceeds from sales of property, plant and equipment 有形固定資産の売却による収入	3,427	2,818	1,335	1,895	1,081	1,953	1,450	1,641	4,808	4,343
Other — net その他	(1,056)	(312)	(2,933)	(186)	(447)	(182)	(111)	939	(1,766)	(3,635)
Net cash used in investing activities 投資活動における資金収支合計	(6,894)	(29,398)	(17,631)	(29,011)	(34,180)	(32,365)	(40,121)	(30,633)	(34,484)	(36,050)
Free cash Flow 純現金収支	19,879	27,771	14,455	572	25,746	18,431	(6,434)	11,221	46,203	25,026
FINANCING ACTIVITIES : 財務活動における資金収支										
Net borrowings (repayments) of short-term bank loans 短期借入金の増減	5,141	3,738	(2,864)	15,515	(18,087)	(1,371)	5,786	2,909	(4,842)	(3,860)
Proceeds from issuance of long-term debt and warrants 長期債務の増加及び新株引受権の発行	1,050	5,446	648	25,413	775	715	13,102	10,358	1,011	1,924
Repayments of long-term debt 長期債務の返済	(26,525)	(43,634)	(18,013)	(8,956)	(3,102)	(1,650)	(26,970)	(1,960)	(13,093)	(30,238)
Proceeds from issuance of common stock pursuant to exercise of warrants 新株引受権の行使による株式の発行	—	—	—	—	—	—	—	—	—	—
Dividends paid 支払配当金	(3,355)	(3,407)	(3,408)	(3,372)	(3,371)	(3,337)	(3,267)	(3,085)	(2,942)	(5,670)
Share buyback 消却のための自己株式の取得	—	—	—	(6,971)	—	(18,338)	—	—	—	—
Treasury stock 自己株式の取得	—	—	—	—	—	(749)	(725)	(10,218)	(8,411)	(2,954)
Disposal of treasury stock 自己株式の処分	—	—	—	—	—	—	—	—	—	19
Exercise of stock options ストックオプションの行使	—	—	—	—	—	148	18	—	158	95
Net cash provided by (used in) financing activities 財務活動における資金収支合計	(23,689)	(37,857)	(23,637)	21,629	(23,785)	(24,582)	(12,056)	(1,996)	(28,119)	(40,684)
EFFECT OF EXCHANGE RATE CHANGES ON CASH AND CASH EQUIVALENTS 換算レート変動の影響	1,618	1,510	(1,741)	(1,666)	(2,191)	3,102	3,648	(85)	(2,944)	1,218
NET INCREASE (DECREASE) IN CASH AND CASH EQUIVALENTS 資金収支合計	(2,192)	(8,576)	(10,923)	20,535	(230)	(3,049)	(14,842)	9,140	15,140	(14,440)
CASH AND CASH EQUIVALENTS AT BEGINNING OF THE YEAR 期首現金及び現金同等物残高	90,056	87,864	79,288	68,365	88,900	88,670	85,621	70,779	79,919	95,059
CASH AND CASH EQUIVALENTS AT END OF THE YEAR 期末現金及び現金同等物残高	87,864	79,288	68,365	88,900	88,670	85,621	70,779	79,919	95,059	80,619

Main Products 主要製品

Industrial Automation Business

Control Relays (Relays, Timers, Counters), **Control Switches** (Limit Switches, Micro Switches, Manipulate Switches), **Control Devices** (Temperature Controllers, Power Supplies, Level Controllers, Protective Devices, Digital Power Meters, Transmission Units, Wireless Units, Energy-Saving Devices, etc.), **Sequence Control Equipment** (PLCs, Industrial Networking Equipment, Programmable Terminals, Application software, etc.), **Motion Controllers** (Inverters, Servo Motors, etc.), **Sensors** (Photoelectric Sensors, Proximity Sensors, Displacement Sensors, Length Measurement Sensors, Pressure Sensors, Ultrasound Sensors, Measurement Sensors, Vision Sensors, Visual Components, Information Sensing Equipment, etc.), **Inspection Systems** (Inspection Systems, Sheet Inspection Systems, etc.), **Safety-Related Devices** (Safety Relays, Door Switches, Safety controller, Area Sensors, Safety Mats, etc.).

Electronic Components Business

Switches (Micro Switches, Tactile Switches, Trigger Switches, etc.), **Relays** (General-Purpose Relays, PCB Relays, relays for telecommunications equipment, etc.), **Amusement Components, Units and Systems** (Sensors, Keys, IC's, IC Coin Systems, etc.), **Connectors, Sensors for Consumer, Micro Lens Alleys, Components for Printers and Photocopiers** (Toner Sensors, Face Recognition Systems Software Components, etc.), **Components for Mobile Equipment** (Backlights and Flash Lights For Mobile Phones, etc.).

Automotive Electronic Components Business

Various Automotive Relays, Relays for Printed Circuit Boards, Switches, Keyless Entry Systems, Power Window Switches, Electric Power Steering Controllers, Various Controller, Laser Radar Devices, etc.

Social Systems Business

Station Management, Settlement Systems and Modules (Automated Ticket Vending Machines, Automated Passenger Gates, Automated Fare Adjustment Systems, Commuter Ticket Issuing Machines, Ticket Window Machines etc., Credit/Debit Card Transaction Terminals, etc.)
Public Transportation Systems and Modules, Traffic and Road Management Systems (Traffic Management Systems, Vehicle Information and Communication Systems, Travel Time Measurement Systems, Public Transportation Priority Systems, etc.)
Room Access Control Systems, Face Recognition Systems, Card Reader/Writer.

Healthcare Business

Equipment Business (Blood Pressure Monitors, Digital Thermometers, Body Composition Monitors, Digital Pedometers, Heart Monitors, Nebulizers, etc.)
Service Business (Lifestyle Improvement Programs, Healthcare Assistance Programs, etc.)

Others

Entertainment Business (Commercial Game Machines (Photo Sticker Machines), Cellular Phone Content Distribution, Prizes for Commercial Game Machines (Prize Business), etc.)
Personal Computer Peripherals (ADSL Modems, Broadband Routers, Uninterruptible Power Supplies, etc.)
Wireless Sensing Business (Simple Anti-theft Devices for Automobiles (Carmoni), Remote Monitoring Equipment), RFID Business (IC tag, Reader/Writer, Antennae, etc.)

Note: As of October 1, 2004, the ATM and other information equipment business that had been included in the Social Systems Business was transferred to a new company, Hitachi-Omron Terminal Solutions Corp., under a joint venture between Omron and Hitachi Ltd.

インダストリアル オートメーションビジネス

制御用リレー (リレー、タイマ、カウンタ等) 制御用スイッチ (リミットスイッチ、マイクロスイッチ、操作用スイッチ等) 制御用専用機器 (電子温度調節器、電源機器、レベル機器、保護機器、デジタルパネルメータ、無線機器、通報機器、省エネ機器等) シーケンス制御システム機器 (プログラマブルコントローラ、フィールドネットワーク機器、プログラマブルターミナル、各種ソフトウェア等) モーションコントロール機器 (インバータ、サーボシステム等) センサ機器 (光電センサ、近接センサ、変位センサ、測長センサ、圧力センサ、超音波センサ、計測センサ、視覚センサ、映像コンボ、情報センシング機器等) 検査装置 (基板検査装置、シート検査装置) セーフティ用機器 (セーフティリレー、ドアスイッチ、セーフティコントローラ、エアセンサ、セーフティマット等)

エレクトロニクス コンポーネンツビジネス

スイッチ (マイクロスイッチ、タクトイルスイッチ、トリガスイッチ等) リレー (一般電磁リレー、プリント基板搭載型リレー、通信機器用リレー等) アミューズメント機器用部品・ユニット (専用センサ、専用鍵、専用IC、ICコインシステム等) コネクタ、業務民生用センサ、マイクロレンズアレイ 複写機・プリンタ向け部品 (トナーセンサ、顔認証ソフトコンボ等) モバイル機器搭載部品 (携帯電話搭載バックライト・フラッシュ等)

オートモーティブエレクトロニクス コンポーネンツビジネス

各種車載用リレー、プリント基板用リレー、各種スイッチ、キーレスエントリーシステム、パワーウィンドウスイッチ、電動パワーステアリングコントローラ、各種コントローラ、レーザーレーダー等

ソーシャルシステムズ ビジネス

駅務・決済システムおよびモジュール (自動券売機、自動改札機、自動精算機、定期券発行機、窓口処理機、クレジット・デビット決済端末等)
交通管理・道路管理システム (交通管制システム、道路情報提供システム、旅行時間計測システム、交通流監視支援システム等)
入退出管理システム、顔認証システム、カードリーダー等

ヘルスケアビジネス

機器事業 (電子血圧計、電子体温計、体重体組成計、電子歩数計、心電計、ネプライザ等)
サービス事業 (生活習慣改善プログラム、医療現場支援プログラム等)

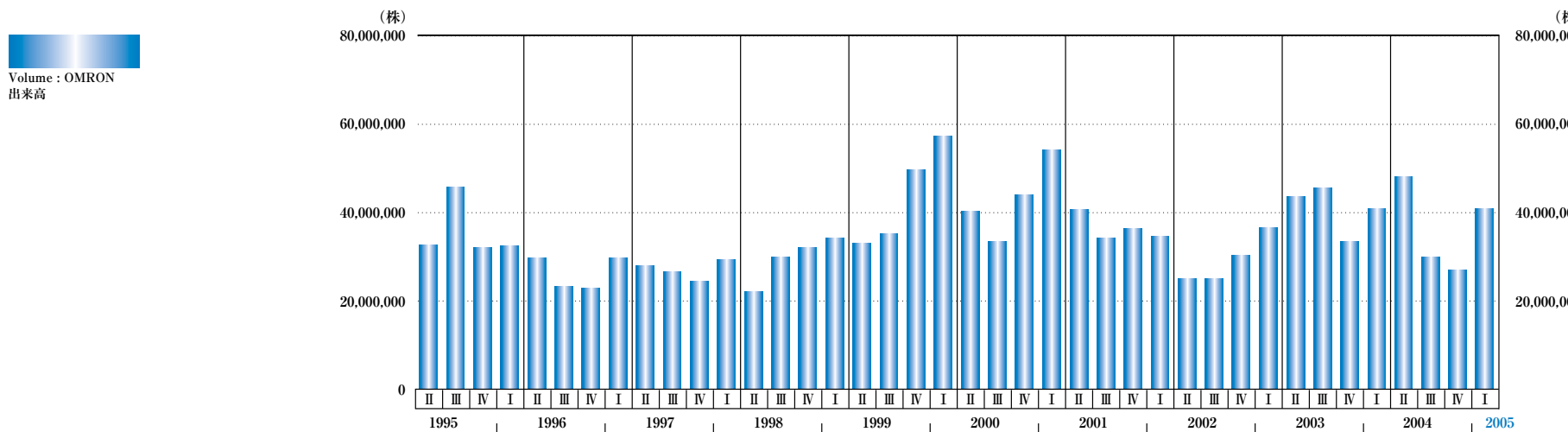
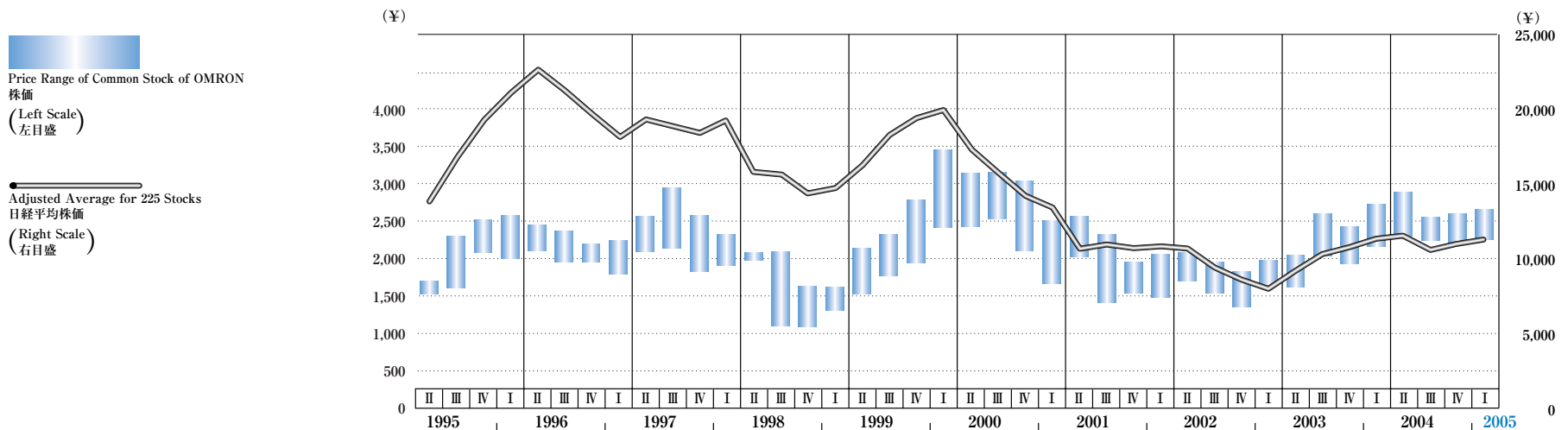
その他

エンタテインメント事業 (業務用ゲーム機 (プリントシール機)、モバイルコンテンツ、業務用ゲーム機用景品 (プライズ事業) 等) パソコン周辺機器事業 (モデム、ブロードバンドルータ、バックアップ電源等)
ワイヤレスセンシング事業 (簡易型車両盗難防止機器 (カーモニ)、絶縁監視機器) RFID事業 (ICタグ、リーダーライタ、アンテナ等)

(注) 当社は、ソーシャルシステムズビジネスに属するATMなどの情報機器事業を2004年10月1日に株式会社日立製作所との共同会社分割により独立した新会社 (日立オムロンターミナルソリューションズ株式会社) に承継しました。

Common Stock Price Range (Osaka Securities Exchange)

株価推移 (大阪証券取引所)

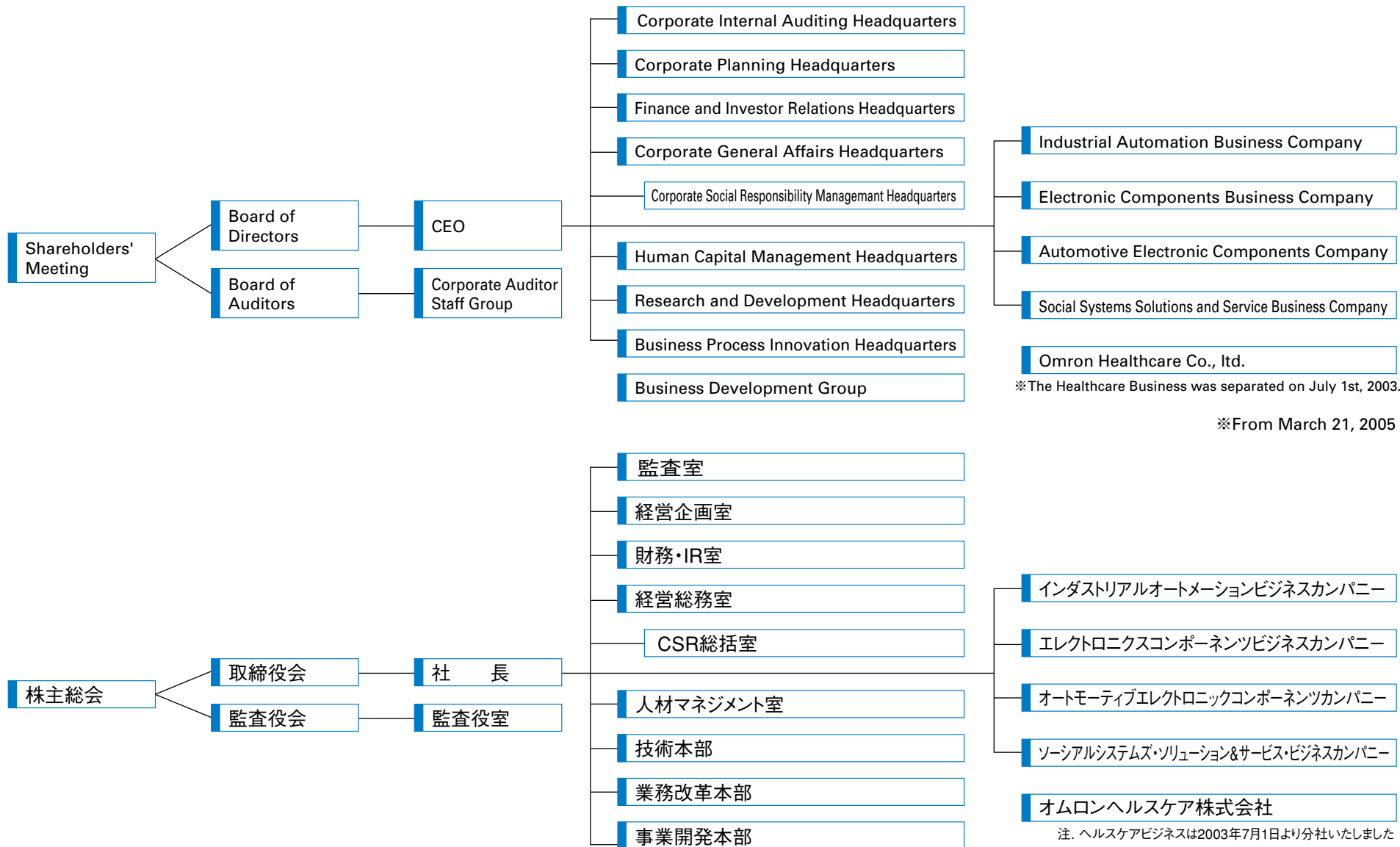


Fiscal Year ended March 31	～年3月期	1996	1997	1998	1999	2000	2001	2002	2003	2004	2005
Price Range 株価 (¥)	High 高値	2,710	2,400	2,900	2,230	3,450	3,200	2,560	2,080	2,740	2,880
	Low 安値	1,500	1,690	1,760	1,059	1,500	1,702	1,390	1,341	1,658	2,220

OMRON Corporate Organization Chart 組織図

Basic Information

概要



※The Healthcare Business was separated on July 1st, 2003.

※From March 21, 2005

注. ヘルスケアビジネスは2003年7月1日より分社いたしました

※2005年3月21日付

Corporate Data (As of March 31, 2005) 会社概要 (2005年3月31日現在)

Head Office	Shiokoji Horikawa, Simogyo-ku kyoto 600-8530, Japan Phone: (075) 344-7000 Fax : (075) 344-7001	本社	京都市下京区塩小路通堀川東入 〒600-8530 電話番号 (075) 344-7000 FAX番号 (075) 344-7001
Tokyo Head Office	3-4-10, Toranomom, Minato-ku Tokyo 105-0001, Japan Phone: (03) 3436-7170 Fax : (03) 3436-7180 Home Page Address http://www.omron.co.jp (Japanese) http://www.omron.com (English)	東京本社	東京都港区虎ノ門3-4-10 〒105-0001 電話番号 (03) 3436-7170 FAX番号 (03) 3436-7180 ホームページアドレス http://www.omron.co.jp (日本語) http://www.omron.com (英語)
Date of Establishment	May 10, 1933	創業日	1933年5月10日
Industrial Property Rights	Number of patents: 2,645 (Japan) 1,882 (Overseas) Number of patents pending: 4,537 (Japan) 1,698 (Overseas)	工業所有権	特許保有権利数 2,645 件 (日本) 1,882 件 (海外) 出願中特許数 4,537 件 (日本) 1,698 件 (海外)
Number of Employees	24,904	従業員数	24,904 名
Paid-in Capital	¥ 64,082 million	払込資本金	640億8千2百万円
Common Stock	Authorized: 487,000,000 shares Issued : 249,121,372 shares Number of shareholders: 30,947	普通株式	授權株式数 487,000,000 株 発行済株式数 249,121,372 株 株主数 30,947 名
Stock Listings	Osaka Securities Exchange Tokyo Stock Exchange Nagoya Stock Exchange Frankfurt Stock Exchange	上場証券取引所	大阪証券取引所 東京証券取引所 名古屋証券取引所 フランクフルト証券取引所

OMRON Corporation

Shiokoji Horikawa, Shimogyo-ku, kyoto 600-8530, Japan